

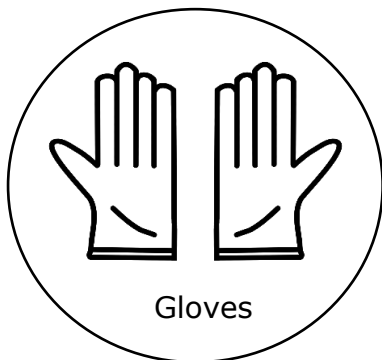
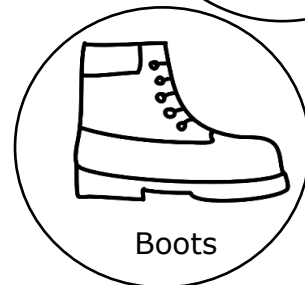
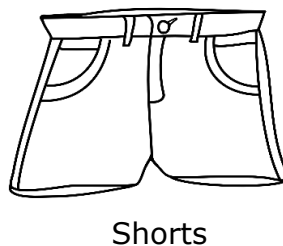
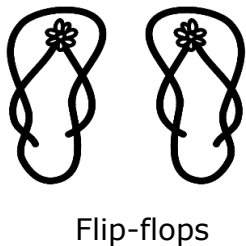
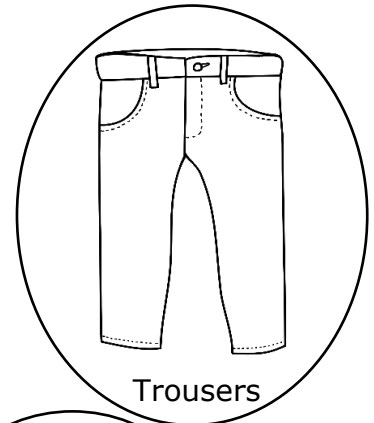
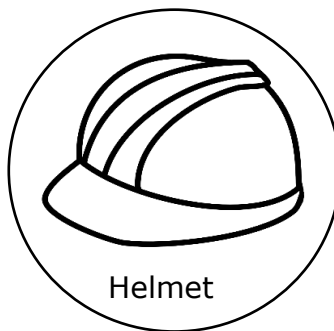
# Safety First!



## Teaching resource

In this exercise, we will try to identify the safety clothing that scientists wear.

Imagine that you are in charge of safety in a lab. Circle the clothing that you think the scientist should wear to keep safe.



Bonus: Laboratories are full of toxic and flammable chemicals that are dangerous when we do not handle them properly. Safety clothing is designed to protect our bodies from exposure to these chemicals. A lab coat, long trousers, closed-toe shoes and gloves protect our skin from chemicals in case of spillage. Many laboratories have large machinery and so helmets help protect our heads when we use them.